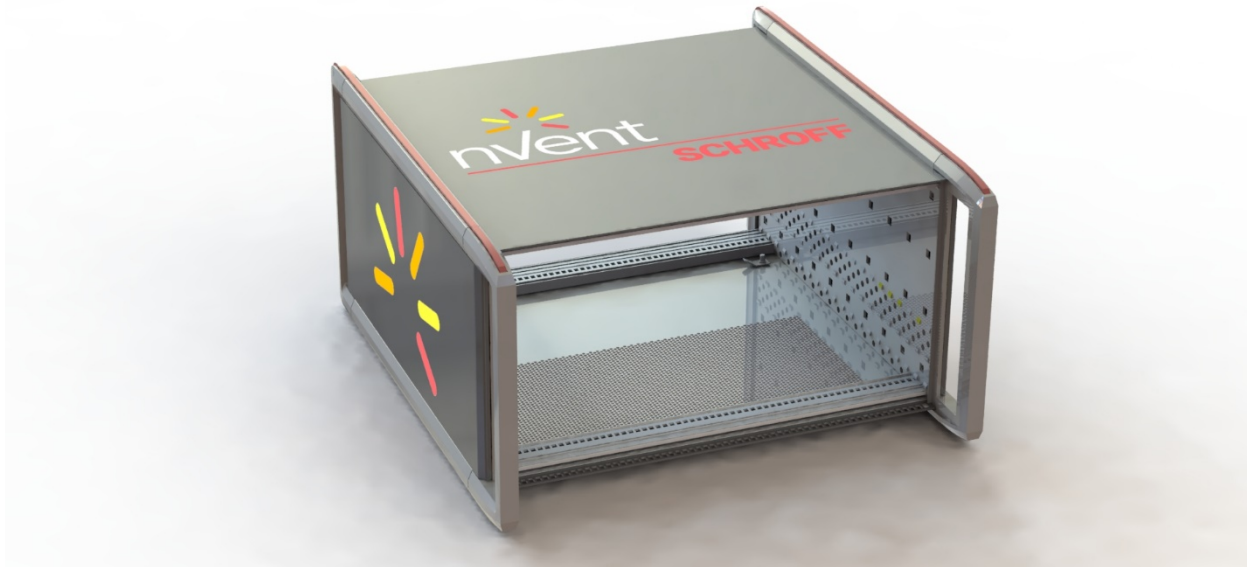


Print Data Guide for the RatiopacPRO Style



Positioning, scaling and printing options

We print:

The top cover can be printed with the upper front and rear horizontal rails up to the side spars of the case frame. The area marked in blue is the maximum print area. See illustration 1.

This makes full-surface printing possible. See illustration 2.

Top cover and horizontal rails

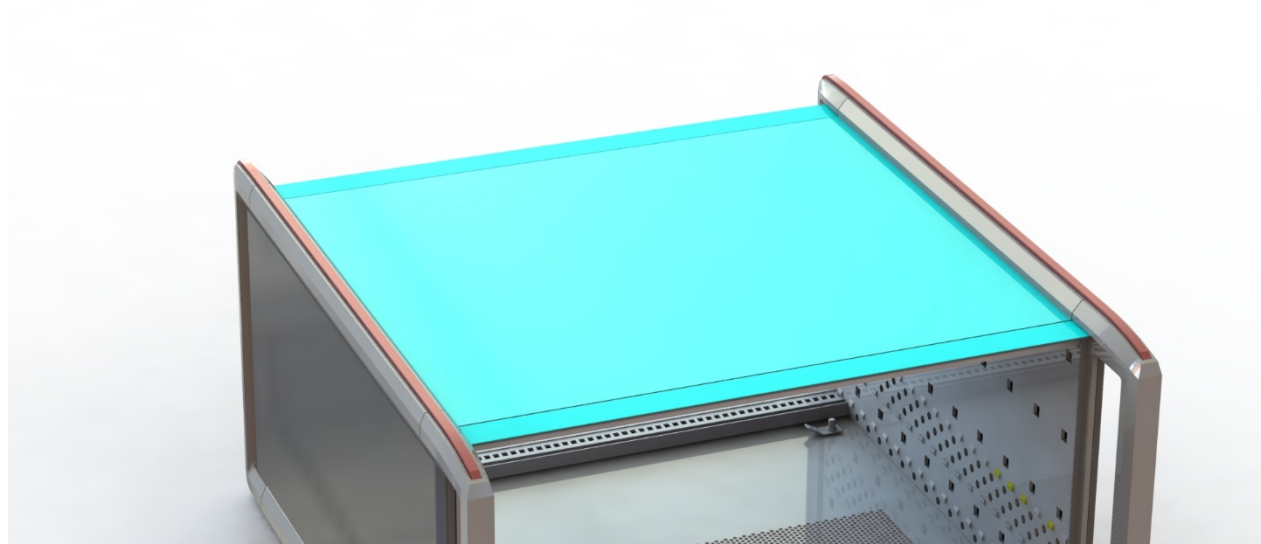


Illustration 1

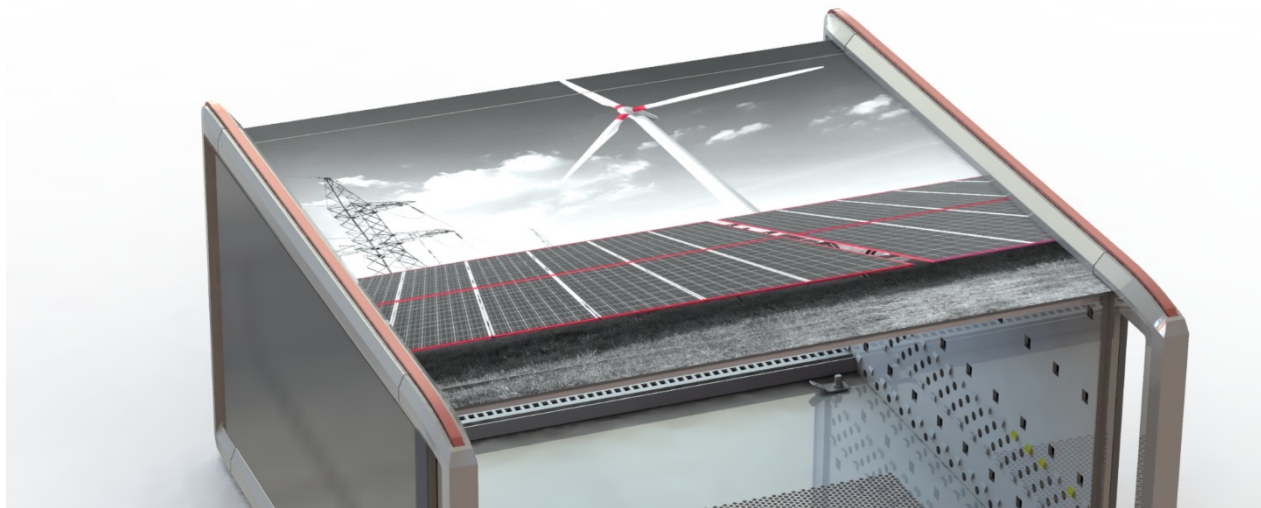


Illustration 2

Dimensions of the max. print area

Shown RatiopacPRO Style in the standard size 3U/ 63HP/ 295D with handles at the front, view from above.

The full-surface print is set off at dimension zero. See illustration 3 and 4.

For an optimal print result, please provide us with the file in the appropriate image size. See also page 9.

For the dimensions of the max. print range, please refer to Table 1.

Top cover and horizontal rails

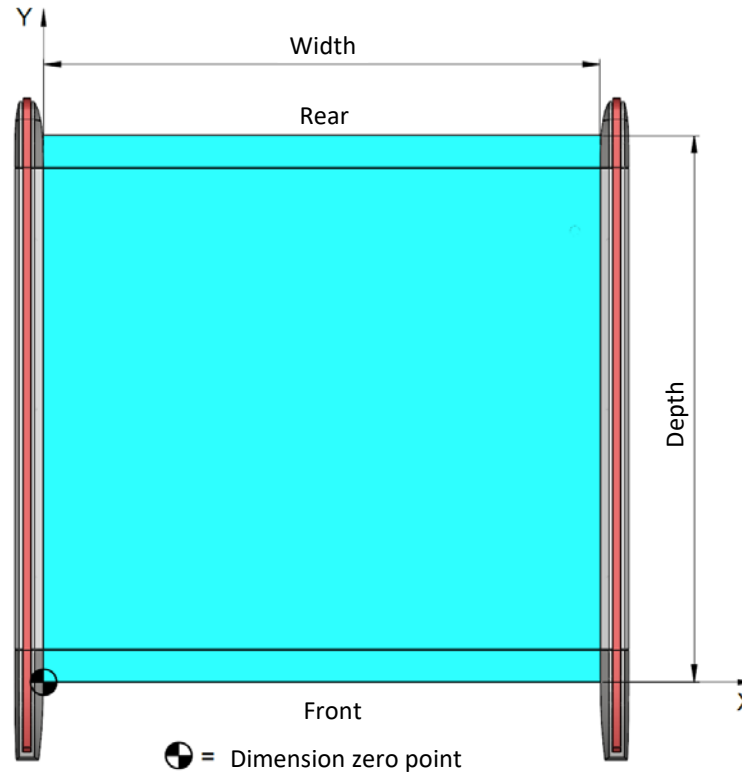


Illustration 3



Illustration 4

Standard Dimensions			
Width		Depth	
28HP	143,62 mm	235D	255,5 mm
42HP	214,74 mm	295D	315,5 mm
63HP	321,42 mm	355D	375,5 mm
84HP	428,1 mm	415D	435,5 mm

Table 1

Dimensions of the max. print range

If your file is not the right size, you can see in Table 2 what information we need to create the full-surface print for you.

Top cover and horizontal rails



Illustration 5 = Example 1

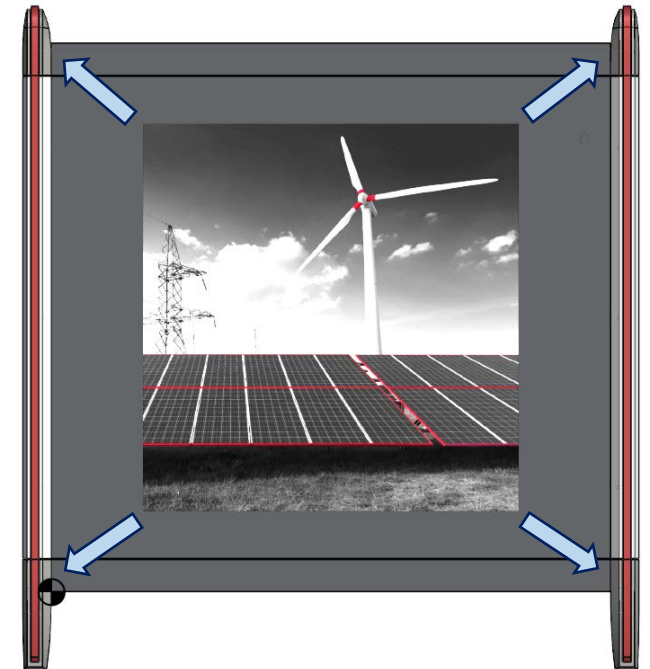


Illustration 6 = Example 2

	Example 1	Example 2
Print area	Width = 321,42mm/ Depth = 315,5mm	Width = 321,42mm/ Depth = 315,5mm
Positioning of the image:	Dimension zero point	Centered in the print area
Image adjustment/ stretching	outwards in direction X and Y	outwards in all directions

Table 2

We print:

The print can also be partially printed only on the top of the cover, without the horizontal rails. Print area see illustration 7.

For logo printing, see illustration 8.

Top cover without horizontal rails

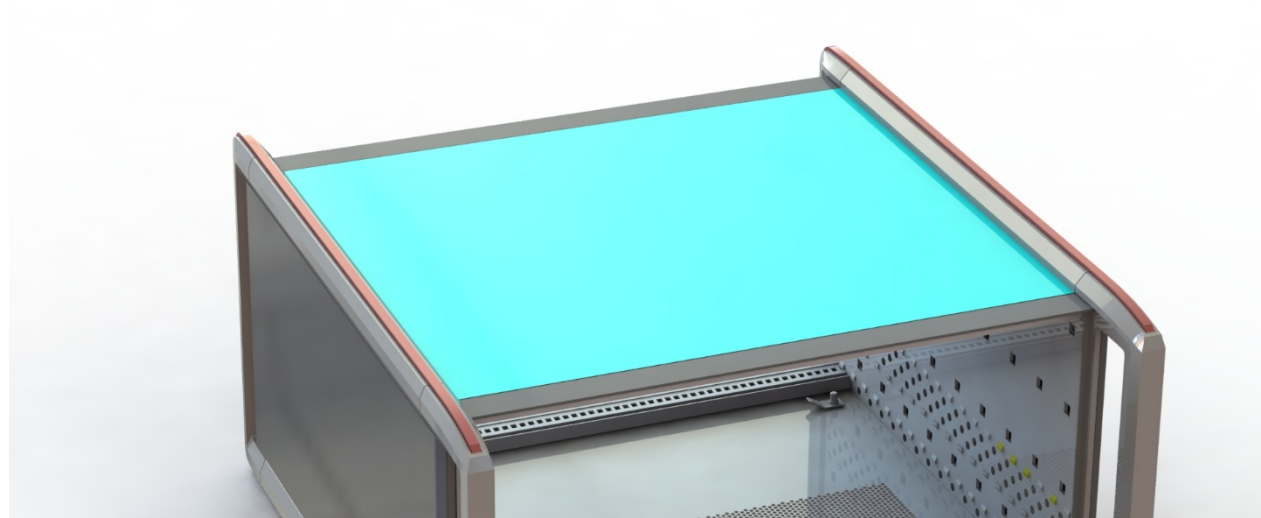


Illustration 7



Illustration 8

Dimensions of the max. print range

The dimension zero point is the same as for full-surface printing. See illustration 9.

Please let us know the position from the dimension zero point in the direction of X and Y, as well as the size of the print. For example, see illustration 10.

Top cover without horizontal rails

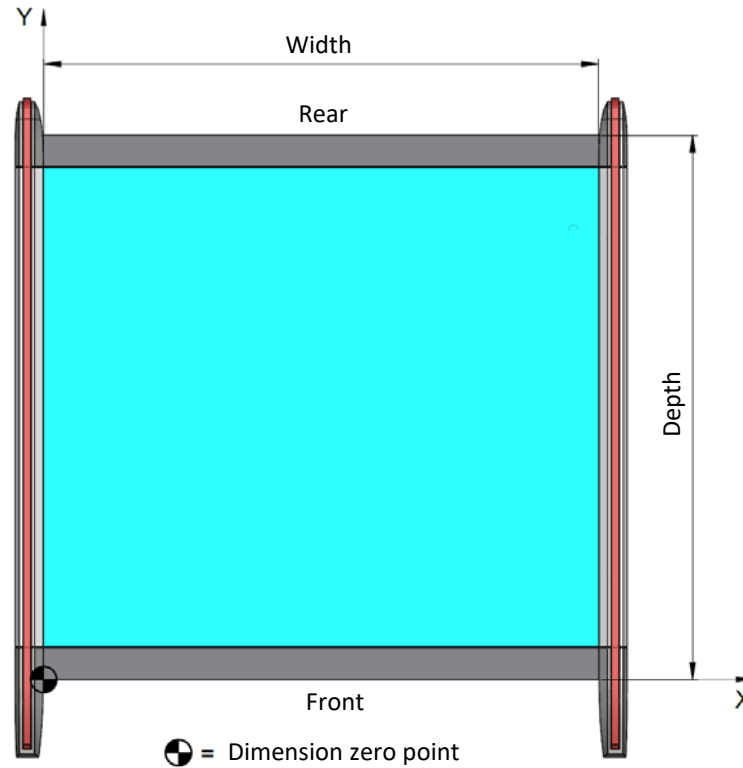


Illustration 9

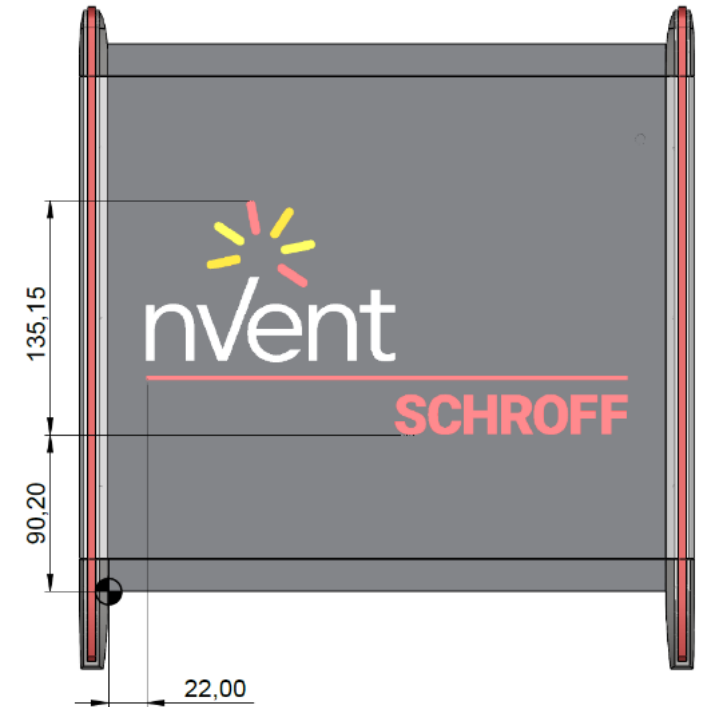


Illustration 10

We print:

It is possible to print the side covers differently on the left and right.

The side panel can be printed over the entire surface or partially.

The full-surface printing is done over the set-offs of the side covers.

See illustration 12 and 13.

You can see the differences in the side covers due to the castings on page 8, illustration 16.

Side covers left and right

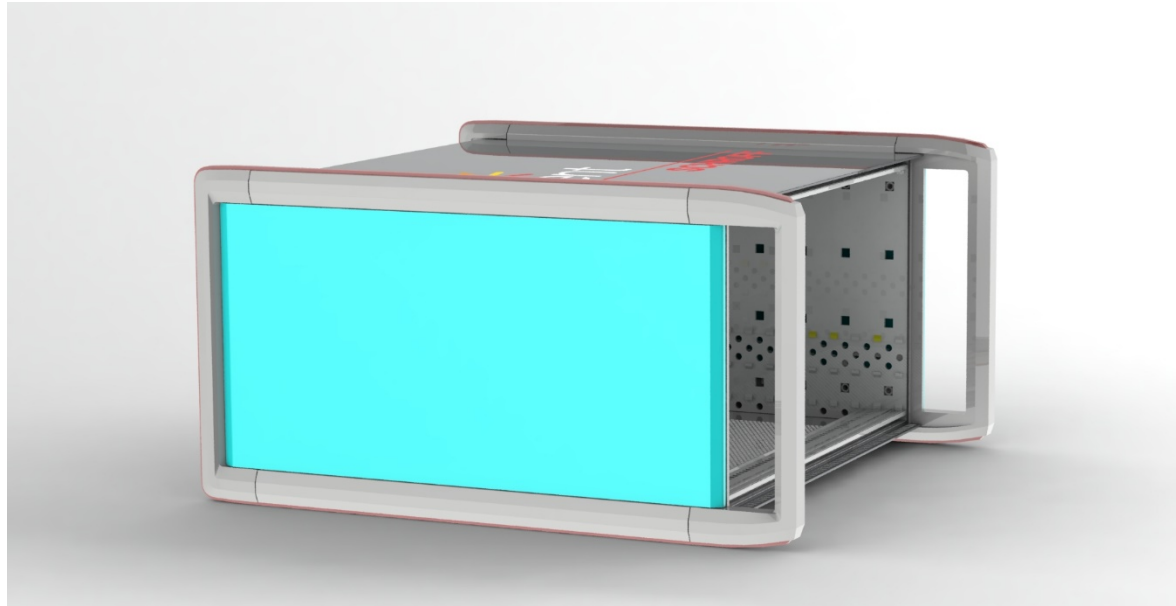


Illustration 11



Illustration 12

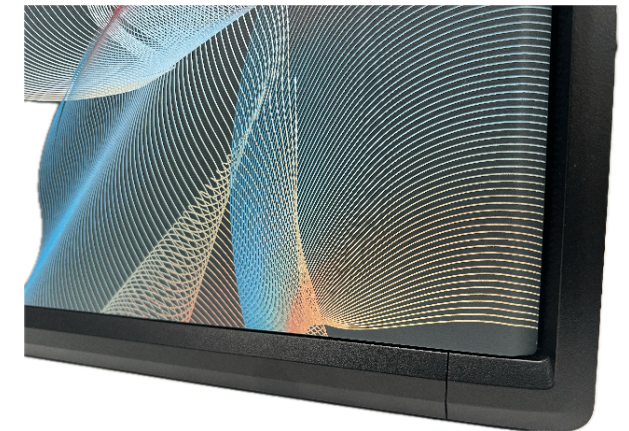


Illustration 13

We print:

Logo print see illustration 14

Side covers left and right



Illustration 14

Dimensions of the max. print area

The dimension zero point on the side panel is at the bottom left. These are the outer edges of the side panel. See illustration 15.

The side plates have different max. printing ranges for a certain depth. See Table 4. This is due to the different castings that can be used. With and without handle. For the difference, see illustration 16.

Side Covers left and right

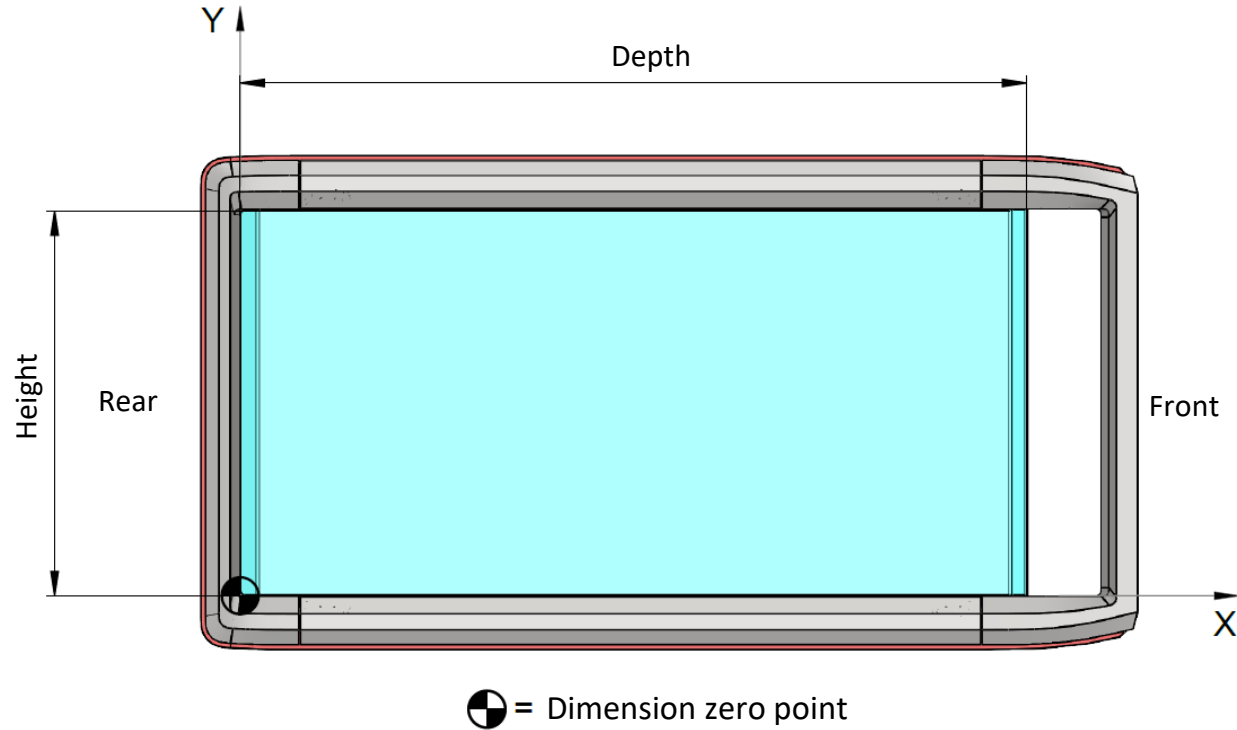


Illustration 15

Dimensions and information on side cover printing, please communicate to us as on pages 3 and 5 (example Top cover).

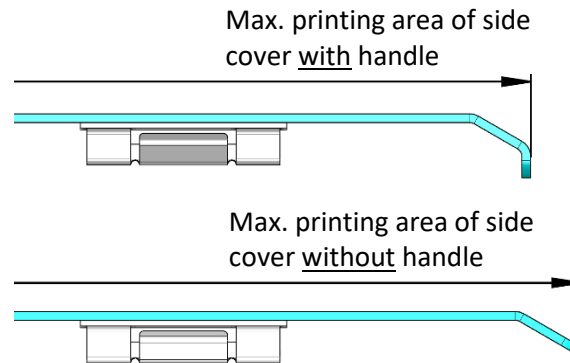


Illustration 16

Standard Dimension					
	Height	Depth	w/o Handle	With handle (Front or Rear)	With handle (Front and Rear)
2U	67,90 mm	235D	265,89 mm	260,19 mm	254,49 mm
3U	112,35 mm	295D	325,89 mm	320,19 mm	314,49 mm
4U	156,80 mm	355D	385,89 mm	380,19 mm	374,49 mm
6U	245,70 mm	415D	445,89 mm	440,19 mm	343,49 mm

Table 4

Request for print files

Writings/ Text:	600 dpi
Design Layout/ Logo:	400 – 600 dpi
Photo/ Picture (in the final format):	300 dpi
If scaling of Pictures necessary:	> 300 dpi

Vector data is preferred, as we do not suffer any loss of quality here. If fonts are included, make sure that the fonts are either embedded or converted to curves.

Image files can also be used.

The common file formats for this are: PNG, JPEG, PDF, EPS etc.

If you don't provide vectorized data, make sure you have a transparent background, otherwise a white background will be printed, see illustration below.

Transparent background



Illustration 17

Non-transparent background



Illustration 18